

The background of the entire page is a light gray color with a pattern of musical notation. It features several staves of music with notes, rests, and various chords written in a light gray font. The notation is slightly blurred and overlaps, creating a sense of depth and movement. The chords include G-7, C7, F6, B-7, D7, A-7, Gbmaj7, F-7, Ebmaj7, Fmaj7, Ab6, and G-7. There are also some triplets and other musical symbols scattered throughout.

Urs Nüssli

Grundlagen in Solfège

**Für alle Instrumente
und Stilrichtungen**

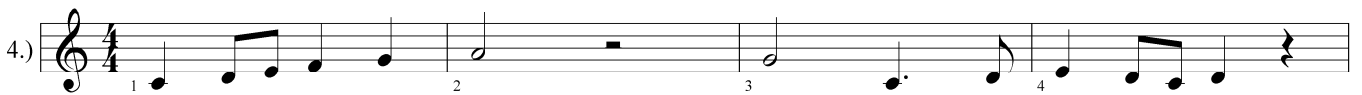
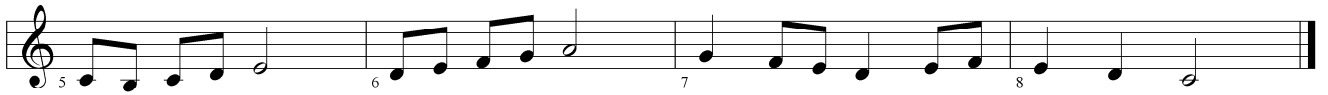
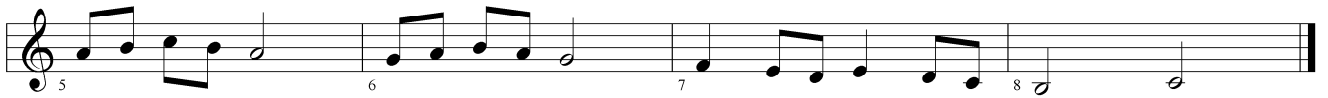
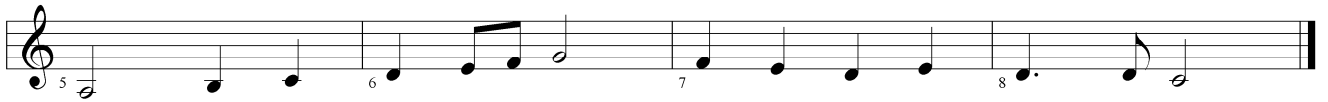
Band 2/4

INHALTSVERZEICHNIS

1. KAPITEL Repetition C-, F-, G-Dur	3
2. KAPITEL Repetition B ^b - und D-Dur.....	10
3. KAPITEL E ^b -Dur	15
4. KAPITEL A-Dur	19
5. KAPITEL Diatonische Akkordfolgen I - V7 - I	23
6. KAPITEL Gemischte Übungen	26
7. KAPITEL Diatonische Akkordfolgen I - IV - V7 - I	30
8. KAPITEL Diatonische Akkordfolgen IIm7 - V7 - I	34
9. KAPITEL Diatonische Intervalle: Terzen, Quarten und Quinten	38
10. KAPITEL Diatonische Intervalle: Sexten und Septimen	41
<u>DIE SOLFÈGE-BÄNDE IN DER ÜBERSICHT</u>	45

1. KAPITEL


Repetition C-, F-, G-Dur




3. KAPITEL

E♭-Dur

1.)




Musical notation for exercise 1, first line. Treble clef, E-flat major key signature (two flats), 4/4 time signature. The line contains four measures with notes: G4 (quarter), A4 (quarter), B4 (quarter), C5 (quarter). Fingering: 1, 2, 3, 4.




Musical notation for exercise 1, second line. Treble clef, E-flat major key signature (two flats), 4/4 time signature. The line contains four measures with notes: D5 (quarter), E5 (quarter), F5 (quarter), G5 (quarter). Fingering: 5, 6, 7, 8.

2.)




Musical notation for exercise 2, first line. Treble clef, E-flat major key signature (two flats), 4/4 time signature. The line contains four measures with notes: G4 (quarter), A4 (quarter), B4 (quarter), C5 (quarter). Fingering: 1, 2, 3, 4.




Musical notation for exercise 2, second line. Treble clef, E-flat major key signature (two flats), 4/4 time signature. The line contains four measures with notes: D5 (quarter), E5 (quarter), F5 (quarter), G5 (quarter). Fingering: 5, 6, 7, 8.

3.)




Musical notation for exercise 3, first line. Treble clef, E-flat major key signature (two flats), 3/4 time signature. The line contains four measures with notes: G4 (quarter), A4 (quarter), B4 (quarter), C5 (quarter). Fingering: 1, 2, 3, 4.




Musical notation for exercise 3, second line. Treble clef, E-flat major key signature (two flats), 3/4 time signature. The line contains four measures with notes: D5 (quarter), E5 (quarter), F5 (quarter), G5 (quarter). Fingering: 5, 6, 7, 8.

4.)




Musical notation for exercise 4, first line. Treble clef, E-flat major key signature (two flats), 3/4 time signature. The line contains four measures with notes: G4 (quarter), A4 (quarter), B4 (quarter), C5 (quarter). Fingering: 1, 2, 3, 4.




Musical notation for exercise 4, second line. Treble clef, E-flat major key signature (two flats), 3/4 time signature. The line contains four measures with notes: D5 (quarter), E5 (quarter), F5 (quarter), G5 (quarter). Fingering: 5, 6, 7, 8.

5.)



Musical notation for exercise 5, first line. Treble clef, E-flat major key signature (two flats), 4/4 time signature. The line contains four measures with notes: G4 (quarter), A4 (quarter), B4 (quarter), C5 (quarter). Fingering: 1, 2, 3, 4.



Musical notation for exercise 5, second line. Treble clef, E-flat major key signature (two flats), 4/4 time signature. The line contains four measures with notes: D5 (quarter), E5 (quarter), F5 (quarter), G5 (quarter). Fingering: 5, 6, 7, 8.

5. KAPITEL

Diatonische Akkordfolgen I- V7- I

1.)

1. I V7 I

5. I V7 I

2.)

1. I V7 I

5. V7 I

3.)

1. I V7 I V7

5. I V7 I

4.)

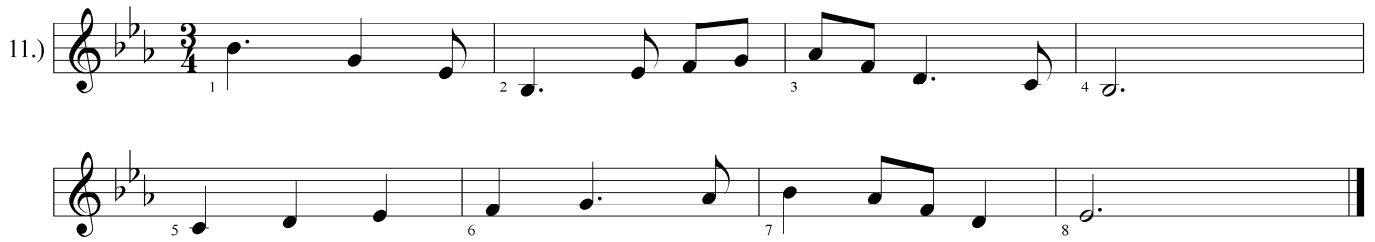
1. I V7 I V7

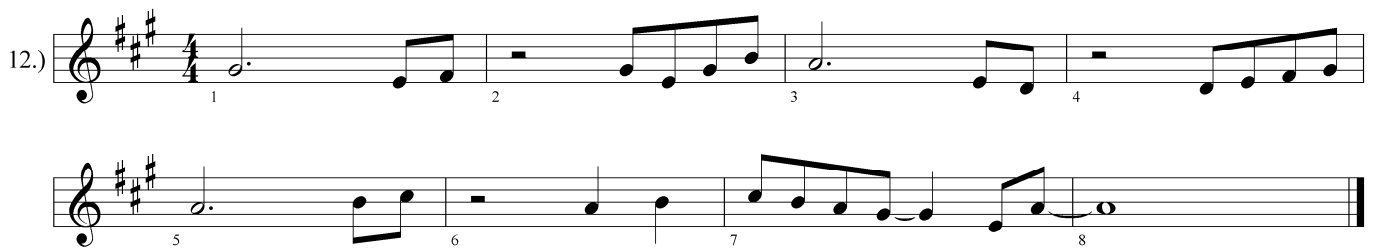
5. I V7 I

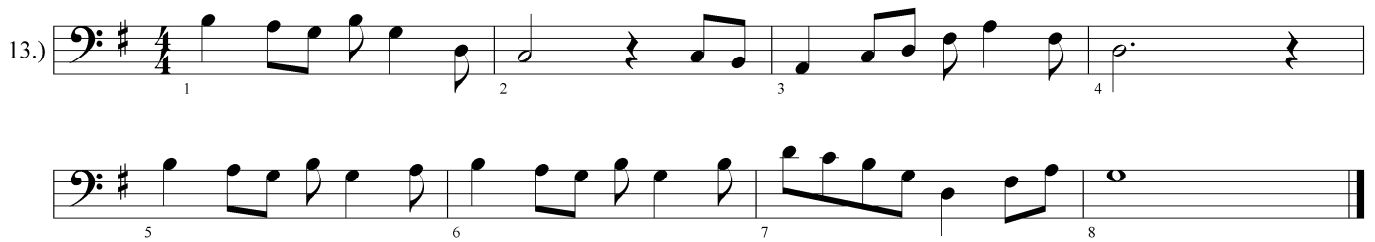
5.)

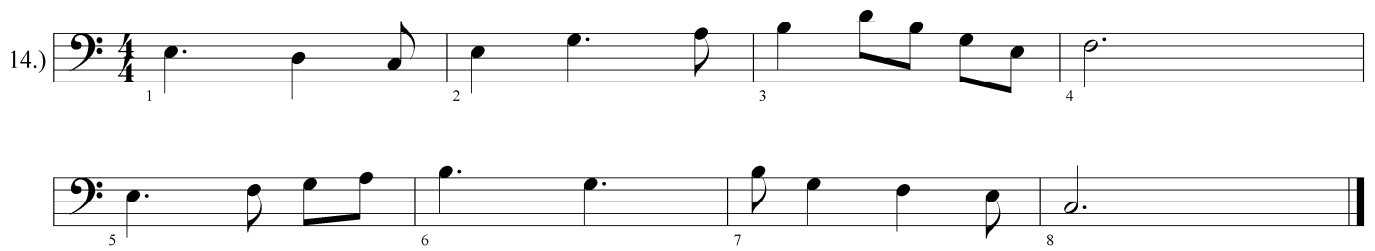
1. I V7 I V7

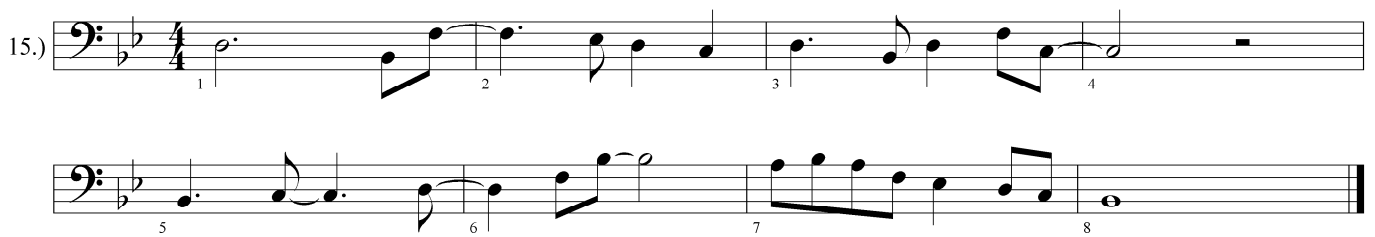
5. I V7 I

11.) 

12.) 

13.) 

14.) 

15.) 

6. KAPITEL

Gemischte Übungen

1.)

1. *Exercise 1 (Treble clef, 4/4 time):* Measures 1-4 (fingerings 1, 2, 3, 4) and measures 5-8 (fingerings 5, 6, 7, 8).

2.)

2. *Exercise 2 (Treble clef, 4/4 time, one sharp):* Measures 1-4 (fingerings 1, 2, 3, 4) and measures 5-8 (fingerings 5, 6, 7, 8).

3.)

3. *Exercise 3 (Treble clef, 4/4 time, two flats):* Measures 1-4 (fingerings 1, 2, 3, 4) and measures 5-8 (fingerings 5, 6, 7, 8).

4.)

4. *Exercise 4 (Treble clef, 3/4 time):* Measures 1-4 (fingerings 1, 2, 3, 4) and measures 5-8 (fingerings 5, 6, 7, 8).

5.)

5. *Exercise 5 (Bass clef, 3/4 time, three sharps):* Measures 1-4 (fingerings 1, 2, 3, 4) and measures 5-8 (fingerings 5, 6, 7, 8).

7. KAPITEL

Diatonische Akkordfolgen I- IV- V7- I

1.)

I IV V7 I

2.)

I IV V7 I

3.)

I IV I V7 I IV V7 I

4.)

I IV V7 I I IV V7 I

5.)

I IV I V7 I IV V7 I

11.)

11.) Musical notation for exercise 11, first system. Treble clef, key signature of two flats (Bb, Eb), 4/4 time signature. The first line contains measures 1 through 4. Measure 1 starts with a quarter rest, followed by a quarter note G4, a quarter note A4, and a quarter note Bb4. Measure 2 contains a quarter note C5, a quarter note Bb4, and a quarter note A4. Measure 3 contains a quarter note G4, a quarter note F4, and a quarter note E4. Measure 4 contains a quarter note D4, a quarter note C4, and a quarter note Bb3. A triplet of eighth notes (G4, A4, Bb4) is marked above measures 1, 2, and 3.

11.) Musical notation for exercise 11, second system. The second line contains measures 5 through 8. Measure 5 contains a quarter note D4, a quarter note C4, and a quarter note Bb3. Measure 6 contains a quarter note A3, a quarter note G3, and a quarter note F3. Measure 7 contains a quarter note E3, a quarter note D3, and a quarter note C3. Measure 8 contains a quarter note Bb2, a quarter note A2, and a quarter note G2. A triplet of eighth notes (D4, C4, Bb3) is marked above measure 5, and a triplet of eighth notes (A3, G3, F3) is marked above measure 6.

12.)

12.) Musical notation for exercise 12, first system. Treble clef, key signature of one sharp (F#), 3/4 time signature. The first line contains measures 1 through 4. Measure 1 starts with a quarter rest, followed by a quarter note G4, a quarter note A4, and a quarter note B4. Measure 2 contains a quarter note C5, a quarter note B4, and a quarter note A4. Measure 3 contains a quarter note G4, a quarter note F4, and a quarter note E4. Measure 4 contains a quarter note D4, a quarter note C4, and a quarter note B3. A triplet of eighth notes (G4, A4, B4) is marked above measure 1.

12.) Musical notation for exercise 12, second system. The second line contains measures 5 through 8. Measure 5 contains a quarter note A3, a quarter note G3, and a quarter note F3. Measure 6 contains a quarter note E3, a quarter note D3, and a quarter note C3. Measure 7 contains a quarter note B2, a quarter note A2, and a quarter note G2. Measure 8 contains a quarter note F2, a quarter note E2, and a quarter note D2. A triplet of eighth notes (A3, G3, F3) is marked above measure 6.

13.)

13.) Musical notation for exercise 13, first system. Bass clef, key signature of two flats (Bb, Eb), 4/4 time signature. The first line contains measures 1 through 4. Measure 1 starts with a quarter rest, followed by a quarter note G2, a quarter note A2, and a quarter note Bb2. Measure 2 contains a quarter note C3, a quarter note Bb2, and a quarter note A2. Measure 3 contains a quarter note G2, a quarter note F2, and a quarter note E2. Measure 4 contains a quarter note D2, a quarter note C2, and a quarter note Bb1. A triplet of eighth notes (G2, A2, Bb2) is marked above measure 1.

13.) Musical notation for exercise 13, second system. The second line contains measures 5 through 8. Measure 5 contains a quarter note A1, a quarter note G1, and a quarter note F1. Measure 6 contains a quarter note E1, a quarter note D1, and a quarter note C1. Measure 7 contains a quarter note B0, a quarter note A0, and a quarter note G0. Measure 8 contains a quarter note F0, a quarter note E0, and a quarter note D0. A triplet of eighth notes (A1, G1, F1) is marked above measure 6.

14.)

14.) Musical notation for exercise 14, first system. Bass clef, key signature of two sharps (F#, C#), 2/4 time signature. The first line contains measures 1 through 4. Measure 1 starts with a quarter rest, followed by a quarter note G2, a quarter note A2, and a quarter note B2. Measure 2 contains a quarter note C3, a quarter note B2, and a quarter note A2. Measure 3 contains a quarter note G2, a quarter note F2, and a quarter note E2. Measure 4 contains a quarter note D2, a quarter note C2, and a quarter note B1. A triplet of eighth notes (G2, A2, B2) is marked above measure 1.

14.) Musical notation for exercise 14, second system. The second line contains measures 5 through 8. Measure 5 contains a quarter note A1, a quarter note G1, and a quarter note F1. Measure 6 contains a quarter note E1, a quarter note D1, and a quarter note C1. Measure 7 contains a quarter note B0, a quarter note A0, and a quarter note G0. Measure 8 contains a quarter note F0, a quarter note E0, and a quarter note D0. A triplet of eighth notes (A1, G1, F1) is marked above measure 6.

15.)

15.) Musical notation for exercise 15, first system. Bass clef, key signature of two flats (Bb, Eb), 3/4 time signature. The first line contains measures 1 through 4. Measure 1 starts with a quarter rest, followed by a quarter note G2, a quarter note A2, and a quarter note Bb2. Measure 2 contains a quarter note C3, a quarter note Bb2, and a quarter note A2. Measure 3 contains a quarter note G2, a quarter note F2, and a quarter note E2. Measure 4 contains a quarter note D2, a quarter note C2, and a quarter note Bb1. A triplet of eighth notes (G2, A2, Bb2) is marked above measure 1.

15.) Musical notation for exercise 15, second system. The second line contains measures 5 through 8. Measure 5 contains a quarter note A1, a quarter note G1, and a quarter note F1. Measure 6 contains a quarter note E1, a quarter note D1, and a quarter note C1. Measure 7 contains a quarter note B0, a quarter note A0, and a quarter note G0. Measure 8 contains a quarter note F0, a quarter note E0, and a quarter note D0. A triplet of eighth notes (A1, G1, F1) is marked above measure 6.

8. KAPITEL

Diatonische Akkordfolgen IIm7- V7- I

1.)

I IIm7 V7 I

IIm7 V7 I

2.)

I IIm7 I V7

I IIm7 V7 I

3.)

I IIm7 V7 I

IIm7 V7 I

4.)

I IIm7 I IIm7

I IIm7 V7 I

5.)

I IIm7 I V7

I IIm7 V7 I

6.)

1 2 3 4 5 6 7 8

7.)

1 2 3 4 5 6 7 8

8.)

1 2 3 4 5 6 7 8

9.)

1 2 3 4 5 6 7 8

10.)

1 2 3 4 5 6 7 8

9. KAPITEL

Diatonische Intervalle: Terzen, Quarten, Quinten

1.)

1 2 3 4
5 6 7 8

2.)

1 2 3 4
5 6 7 8

3.)

1 2 3 4
5 6 7 8

4.)

1 2 3 4
5 6 7 8

5.)

1 2 3 4
5 6 7 8

DIE SOLFÈGE-BÄNDE IN DER ÜBERSICHT

BAND 1

Übungen mit C-Dur, Violin- und Bass-Schlüssel; F-Dur, Violin- und Bass-Schlüssel; G-Dur, Violin- und Bass-Schlüssel; B^b-Dur, Violin- und Bass-Schlüssel; D-Dur, Violin- und Bass-Schlüssel; Duette und Songform

BAND 2

Repetition der Tonarten bis zwei Vorzeichen; E^b-Dur; A-Dur; diatonische Akkordfolgen I - V7 - I; gemischte Übungen; diatonische Akkordfolgen I - IV - V7 - I, IIm7 - V7 - I; Diatonische Intervalle: Terzen, Quarten und Quinten, Sexten und Septimen; Duette

BAND 3

Melodisch Moll, Harmonisch Moll, Natürlich Moll; Melodisch Moll (klassisch); Übungen zu Sekundärdominanten V7/V, V7/IV, V7/II, V7/VI und V7/III; Duette

BAND 4

Übungen mit den Kirchentonleitern mixolydisch, aeolisch, dorisch, phrygisch, lydisch; gemischte Übungen mit modalen Skalen; chromatische Alterationen; chromatische Melodien; Tonsprünge mit und ohne Sequenzen